

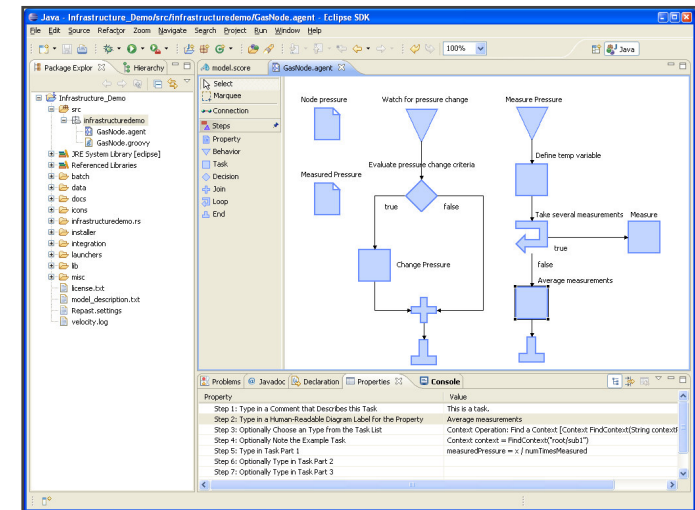
R and Repast Symphony

Presented by
Michael J. North, MBA, Ph.D.
north@anl.gov

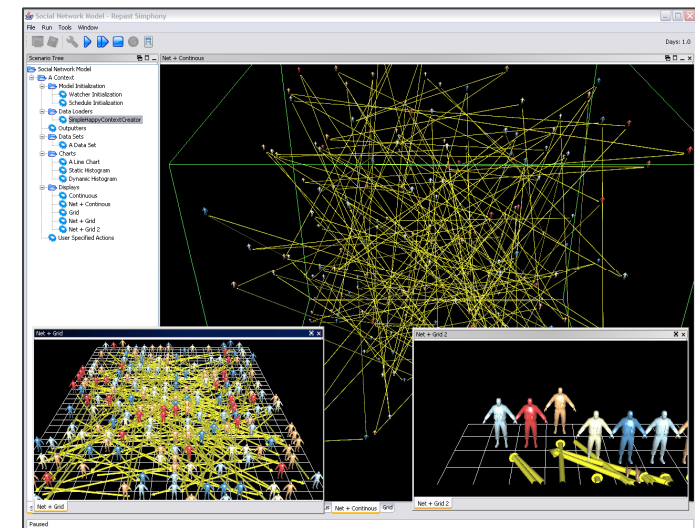
Repast Symphony Makes Modeling Easier, Faster, and More Reliable

- Repast Symphony is a free and open source Java-based agent-based modeling and simulation (ABMS) toolkit
- Repast Symphony makes ABMS easier, faster, and more reliable by offering:
 - The modeler's choice of any combination of point-and-click, Java, or Groovy model development
 - The modeler's choice of point-and-click model execution or automated Monte Carlo simulation
 - Built-in logging and graphing tools
 - Automated connections to free tools including R statistics, spreadsheets, VisAD visualization, Weka data mining, and iReport visual report creation
 - An extremely flexible hierarchically nested definition of space including point-and-click networks, 2D, 3D, and GIS
 - Point-and-click model text file and database storage
 - Built-in adaptation libraries
- More information on Repast, as well as free downloads, can be found at the development team's home page:

<http://repast.sourceforge.net/>

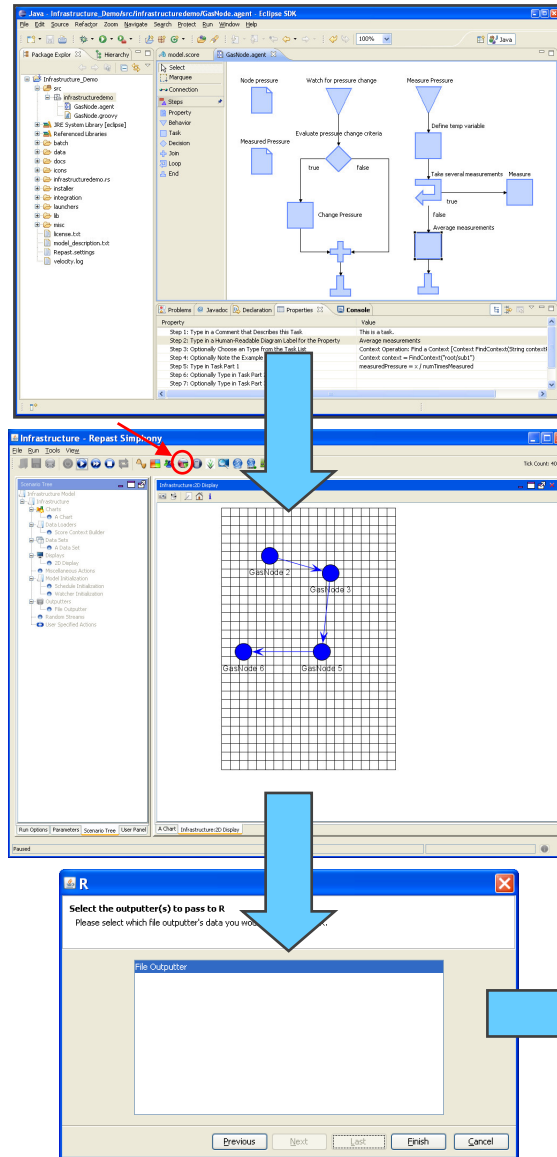


**Optional Point-and-Click
Model Development**



**Optional Point-and-Click
Model Execution**

How to Use R with Repast Symphony



1. Build your agent-based model
2. Run your model
3. Activate the R wizard
4. Analyze your data with R and R Commander

R and R Commander

